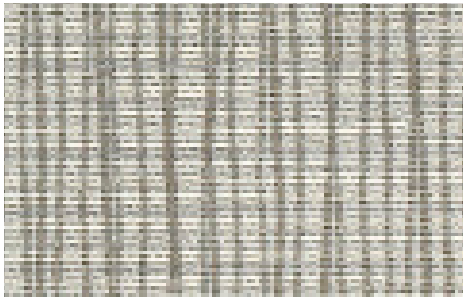
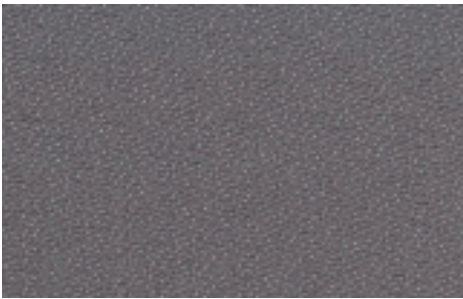


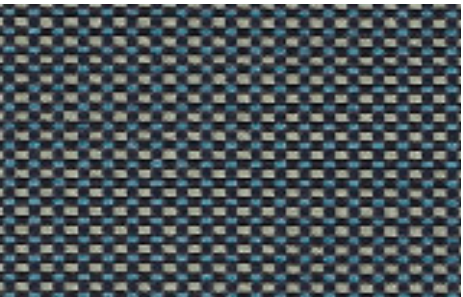
SWIM BISCAI



GRAPH ALPINE



ORIGIN IRON



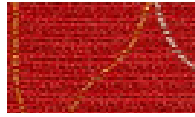
GRID SURF



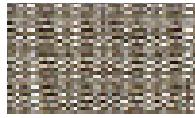
WIDGET JUNIPER



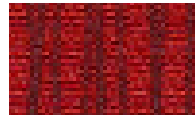
SANDSTONE



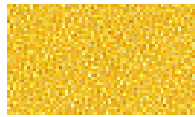
CRIMSON



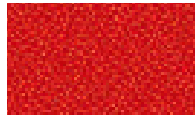
CHALICE



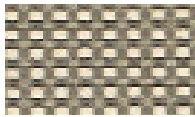
RUBY



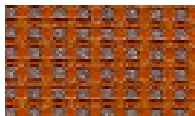
EUREKA



POPPY



CHROME



EMBER



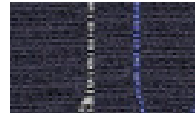
FOG



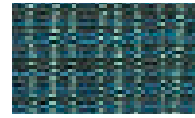
GRECIAN



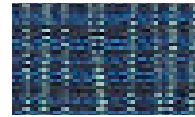
ANJOU



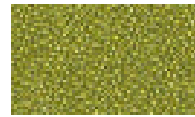
INK



TIDAL



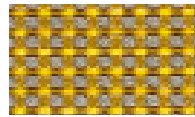
WAVE



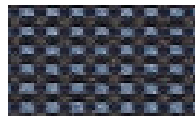
GAIA



SAPPHIRE



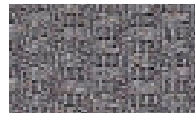
SUNBEAM



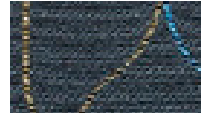
INDIGO



CAMEL



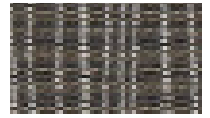
GRAPHITE



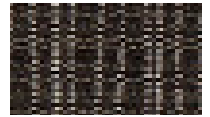
BALKAN



RIVERBANK



ALLOY



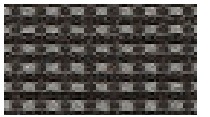
COAL



ARUNDEL



JET



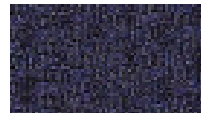
FLINT



JET








BANTAM



INDIGO

KICKSTART

ALLIANCE

Pattern - width	Fiber content	Finish	Abrasion	Lightfastness	Approx. repeat	Cleaning code
Graph - 56" 	75% Repreve® Post Consumer Recycled Polyester, 25% Polyester		170,000 double rubs	Class 5 40 hours	3 3/8" L, 7 1/2" W	W
Grid - 54" 	64% Repreve® Post Consumer Recycled Polyester, 36% Polyester		160,000 double rubs	Class 4 40 hours	1/16" L, 1/8" W	WS
Origin - 58" 	100% Post Consumer Recycled Polyester		282,000 double rubs	Class 4 40 hours		WS
Swim - 54" 	65% Recycled Polyester, 35% Polyester		50,000 double rubs	Class 4.5 40 hours	6 3/4" L, 7 1/2" W	WS
Widget - 54" 	83% Post Consumer Recycled Polyester, 17% Post Industrial Recycled Polyester		100,000 double rubs	Class 4 40 hours	1/2" L, 1/4" W	WS



GREENGUARD certified.
CA Section 01350 compliant
Eligible for CHPS Low-Emitting
Material Credits



Search for fabrics by
approved cleaners



Find hundreds of pre-approved,
in grade and in stock fabrics
in 5 simple steps

* ACT® Registered Certification Marks

These fabrics when used with proper components are compatible with California Technical Bulletin 133

Multiple factors affect fabric durability and appearance retention, including end-user application and proper maintenance

Abrasion test results exceeding ACT Performance Guidelines are not an indicator of product lifespan

Cleaning Code Definition

- W: Water-based foam or cleaner
- WS: Clean with water-based cleaning agents or foam

Visit memosamples.com to view full pattern repeat and complete specs

©2022

08993208



memosamples.com | 800.366.6839

MOMENTUM
TEXTILES & WALLCOVERING